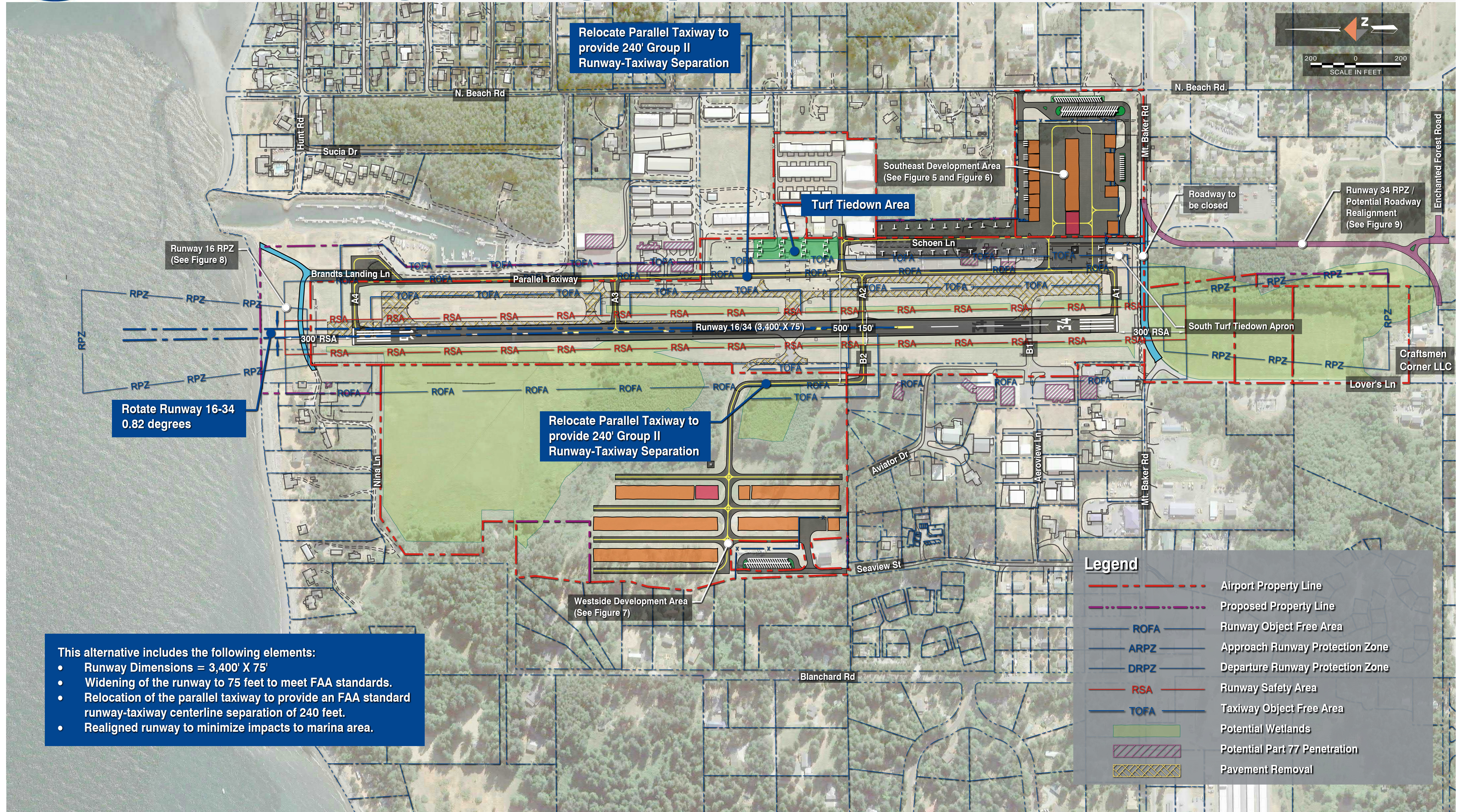




Figure 4: Runway/Taxiway Alternative 4-Runway Realignment, Displaced Thresholds, & 240' Runway-Taxiway Separation



- This alternative includes the following elements:
- Runway Dimensions = 3,400' X 75'
 - Widening of the runway to 75 feet to meet FAA standards.
 - Relocation of the parallel taxiway to provide an FAA standard runway-taxiway centerline separation of 240 feet.
 - Realigned runway to minimize impacts to marina area.